

# FRONTMATEC

When **precision** is key  
Weighing systems





# Precision in payment

The importance of having certified reliable scales delivering precise weighing of your product is significant, as it has a direct impact on your profitability.

In this documentation you will find a part of our standard delivery program of weighing systems, completely made of stainless steel, especially made for use in slaughter houses and meat processing companies.

Models other than mentioned in this brochure, can be delivered on request.

## Pre-condition and service

Yearly maintenance, calibration and certification of your scale is a pre-condition to keep your scales performing at their best, maintain accuracy and ensure precision in

payment, as well as secure that your scales fulfill the norms within measurement law and regulations.

Get covered by signing a service agreement including:

- Mechanical and technical service
- Adjustment and calibration
- Measurement report
- Calibration certificate
- Legal for trade sealing sticker
- Inspection sticker

Service is performed inside normal working hours by your authorized Frontmatec service technician in compliance with the requirements of EU directives.

# Suitable for crates and boxes

## Bench scale with roller track

- Stainless steel bench scale with roller track
- Suitable for weighing crates and boxes
- The load receptor is a hermetic closed, stainless steel, mono load cells (IP68)
- The scale has an overload safety on all four corners
- The roller track is made off waterproof plastic rollers with stainless steel ball bearings
- The bench scale has four in-height adjustable feet (+/- 50 mm)
- The bench scale is built with legal for trade component

Not included are:

- Weighing indicator and indicator support, type 4300007391
- Installation
- Calibration for legal trade



Type	Dimensions (LxWxH) mm	Weighing capacity kg	Minimum load kg	Lowest readable value kg
5300000858	700x450x750	30	0.2	0.01
5300000864	700x450x830	60	0.4	0.02
5300000857	700x450x900	150	1	0.05
5300000860	700x550x700	30	0.2	0.01
		60	0.4	0.02
		150	1	0.05
5300000859	700x550x900	30	0.2	0.01
		60	0.4	0.02
		150	1	0.05

# Suitable for **unpacked and packed meat**

## Bench scale with plateau

- Stainless steel bench scale with plateau, in a hygienic and easy to clean design
- Suitable for packed and unpacked meat
- The load receptor is a hermetic closed, stainless steel, mono load cells (IP68)
- The scale has an overload safety on all four corners
- The bench scale has four in height adjustable feet (+/- 50 mm)
- The bench scale is built with legal for trade components

Not included are:

- Weighing indicator and indicator support, type 4300007391
- Installation
- Calibration for legal trade

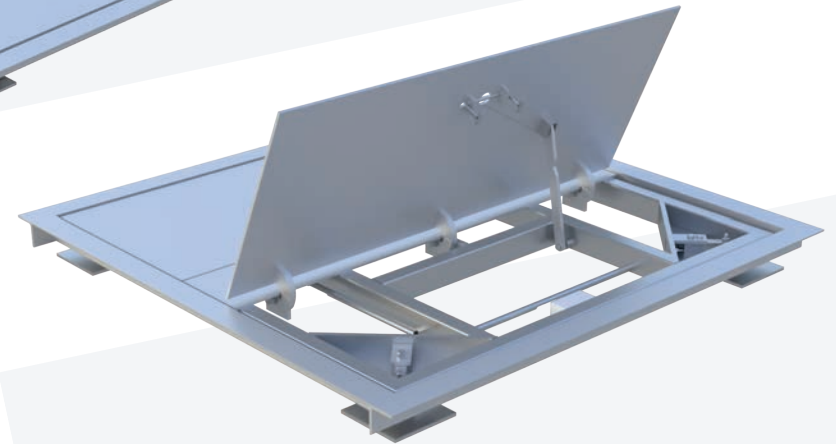
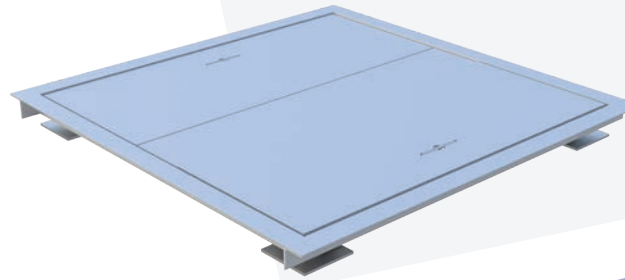


Type	Dimensions (LxWxH) mm	Weighing capacity kg	Minimum load kg	Lowest readable value kg
5300000856 max. 30 kg	400x300x100	30	0.2	0.01
5300000855 max. 60 kg	500x400x750	60	0.4	0.02
4300013292	600x500x130	150	1	0.05
4300050716	600x500x700	30	0.2	0.01
		60	0.4	0.02
		150	1	0.05
4300037908	600x500x800	30	0.2	0.01
		60	0.4	0.02
		150	1	0.05
5300000862	600x500x900	30	0.2	0.01
		60	0.4	0.02
		150	1	0.05

# For the intake area or dispatch area

## Built-in floor scale

A floor scale suitable for installation in a foundation pit. The floor scale is completely made of stainless steel 304 and has four waterproof stainless steel load cells IP67. The floor scale is supplied with a stainless steel tear plate top, which has two foldable lids, for easy cleaning (HACCP). The floor scale has few moving parts, which makes this scale easy for maintenance.



## Option

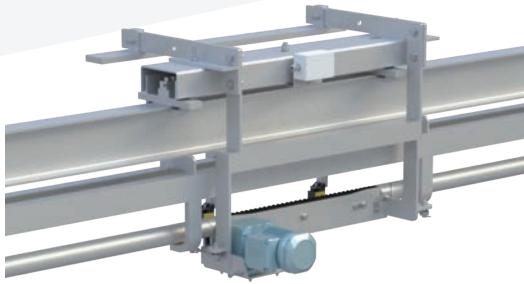
The load cells can be ordered with a cable length of 10 m. In this way the connection box can be placed outside the pit which reduces the risk of problems caused by intruding moisture and water. The floor scale is built with legal for trade components.

Not included are:

- Weighing indicator and indicator support
- Installation
- Calibration for legal trade

Type	Dimensions (LxWxH) (mm)	Weighing capacity (kg)	Minimum load (kg)	Lowest readable value (kg)
5300000850	1500x1500	1500	10	0.5
5300000848 pitframe	1500x1500x120	2000	20	1
5300000851	2000x1500	1500	10	0.5
		2000	20	1
5300000852 pitframe	2000x1500x120	1500	10	0.5
		2000	20	1
5300000846 max. 1500 kg	1250x1250x80	1500	10	0.5
		2000	20	1
5300000847 access plate	1250x900x80	1500	10	0.5
		2000	20	1
4300022564 max. 1500 kg	1250x1250x40	1500	10	0.5
		2000	20	1

# Before and after the chill room



## Overhead motion scale

The overhead motion scale is completely made of stainless steel and consists of:

- A weighing part which is mounted on top of the transport conveyor. Here a stable mounting is possible and the load cells (IP66) are well protected
- A weighing conveyor, which is built into the tube-rail

The weighing part consists of two U-profiles where, in between, the two load cells are mounted. At this position they are well protected against dirt, grease and moisture. The weighing part is installed on top of the rail with clamp plates. This universal attachment fits on many types of rail work.

The overhead motion scale is installed in the existing transport conveyor. By means of point and V-blocks the overhead motion scale stays exactly in line with the tube-rail. The gambrel will be taken by the carrier onto the overhead motion scale, which has a slightly higher transport speed, so the gambrel is pulled away from the

carrier. The product weight is then calculated. At the end of the overhead motion scale the carrier brings the gambrel of the overhead motion scale again. The transportation of the gambrel on and off the scale is going very smoothly. In this way, inconvenient vibrations or shocks are being avoided.

To get a correct weight calculation, the conveyor rail must be mounted in a stable position and the product must reach the overhead motion scale in a steady way (in front of the overhead motion scale there must be a straight piece of rail work).

The scale is at a regular supply and a maximum weighing capacity of 300 kg suitable for up to 1,200 weighing/hour.

Not included are:

- Weighing indicator and indicator support
- Installation
- Calibration for legal trade

Type	Lenght (mm)	Rail type	Weighing capacity (kg)	Minimum load (kg)	Lowest readable value (kg)
5300000210	608	Tube rail	300	20	0.1
5300000208	668	Tube rail	600	20	0.2
5300000209	728	Tube rail	300	20	0.1
			600	20	0.2
5300000077	600	Twin track	300	20	0.1
			600	20	0.2
5300000076	720	Twin track	300	20	0.1
			600	20	0.2

# For the intake area, cutting floor or dispatch area

## Static tube rail scale

This static tube rail scale is completely made of stainless steel which contains a weighing section, in which the load cells are mounted, and a weighing part. The weighing part has a solid shaft with two pointed ends. In the existing tube rail two V-blocks are welded, so that the weighing section stays exactly in line with the existing tube rail. The transportation of the gambrel on and off the scale must go smoothly so inconvenient vibrations or shocks are being avoided.

The weighing section is mounted above the conveyor. It consists of two U-profiles where, in between, the two load cells (IP66) are mounted. This construction gives an optimal protection of the load cells against dirt and moisture. The weighing part will be mounted in-line with the existing tube rail. This universal construction is suitable on many kinds of rail work.

To obtain a good operation, the existing rail work must be a very stable construction and without any vibrations. An option is to install a weighing security which prevents that a product will be pushed

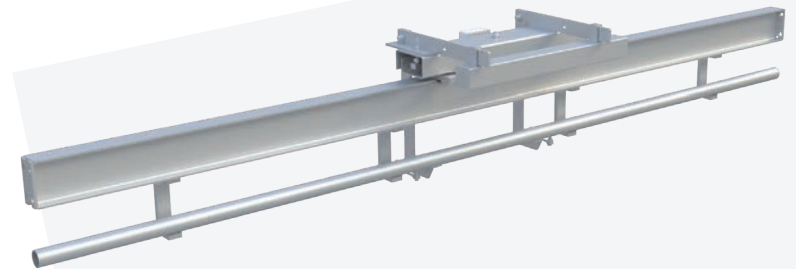
manually over the scale without being weighed. For reading the weight a ZM301 indicator can be installed on the static rail work scale. The scale is built with legal for trade components.

### Option

- Weighing security
- The weighing security consists of a pneumatic gambrel lock, which releases the gambrel after the product is correctly weighed

Not included:

- Indicator
- Installation
- Calibration for legal trade

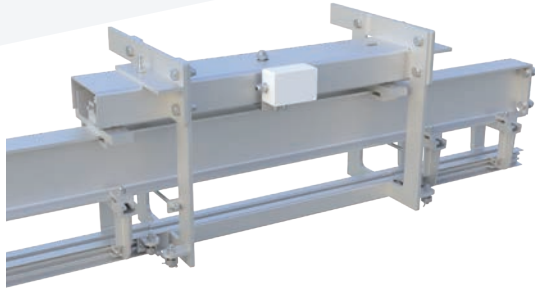


Type	Length mm	Tube diameter mm	Weighing capacity kg	Minimum load kg	Lowest readable value kg
5300001217	320	60	300	2	0.1
5300000355	668	60	300-600	2-4	0.1-0.2
5300000355	668	48	300	2	0.1
5300000356	928	60	600-800	4	0.2
5300001218	1100	60	600-800	4	0.2



# For the intake area, cutting floor or dispatch area

## Static twin-track scale



This static twin-track scale is completely made of stainless steel, which contains a weighing section, in which the load cells are mounted and a weighing part.

The weighing section stays exactly in line with the twin track because the weighing section is at both sides 45° hypotenuse.

The transportation of the trolley on and off the scale must go smoothly so inconvenient vibrations or shocks are being avoided.

The weighing section is mounted above the conveyor. It consists of two U-profiles where, in between, the two load cells (IP66) are mounted. This construction gives an optimal protection of the load cells against dirt and moisture. The weighing part will be mounted in-line with the existing rail. This universal construction is suitable on many kinds of rail work.

To obtain a good operation, the existing railwork must be a very stable construction and without any vibrations. An option is to install a weighing security which prevents that a product will be pushed manually over the scale without being weighed. For reading the weight a ZM301 indicator can be connected to the static twin-track scale. The scale is built with legal for trade components.

Not included are:

- Weighing indicator and indicator support
- Installation
- Calibration for legal trade

Type	Length mm	Weighing capacity kg	Minimum load kg	Lowest readable value kg
5300000357	680	300-600	2-4	0.1-0.2
5300000358	740	300-600	2-4	0.1-0.2
5300001219	660	1,500	10	0.5

# Indicator for static weighing

## Avery ZM201 type 5300000871

Water resistant (IP66) indicator specially designed for the meat industry. Indicator consists of a stainless steel housing with a clear display (height 13 mm) and is easy and logical in use, has no plug connections but waterproof wire transits. Indicator has a continuous read out of weighing data. Including zero setting and tare. Standard supplied with RS232, USB and Ethernet connection to a remote computer system.



## Avery ZM301, type 5300000870

As type ZM201, but with waterproof (IP69K) housing, 20 mm display, and more display options (for example; filling status bar).



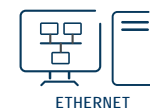
## Avery ZM303, type 5300000873

As type ZM301, but with numeric key pad, and extra function keys.

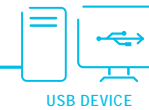
## Avery ZM405, type 5300006686

As type ZM301, but with numeric key pad, and extra function keys. Also programmable.

### STANDARD CONNECTIVITY



### OPTIONAL CONNECTIVITY



ZM301/303

# Indicator for motion weighing

## Avery ZM510 type 5300001220

Complete waterproof indicator (IP69K) specially designed for the meat industry.

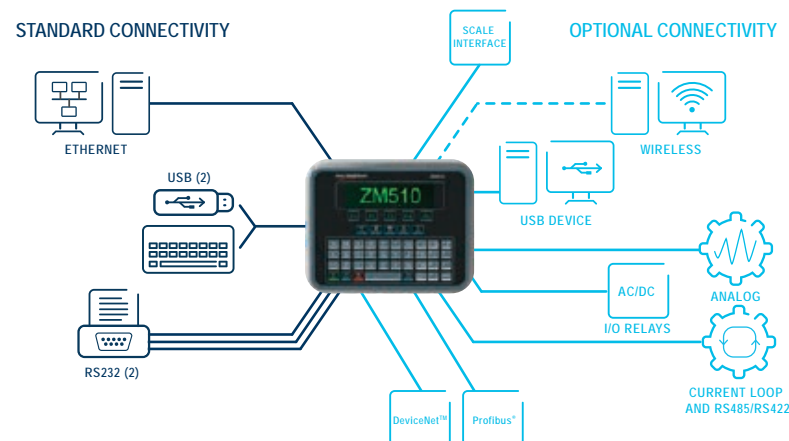
- A stainless steel housing supplied with a clear display with numbers with a height of 22 mm. Easy and logical to operate. No plug connections but waterproof cable transits. The indicator can be connected to a computer. This indicator is standard supplied with 3xRS232 bi-directional serial interfaces (baudrate 150-9600 bps), 2xUSB and 1xTCP/IP interface
- Buttons for setting zero, printing and tare and a large QWERTY keypad
- High contrast graphic display with wide viewing angles
- With the key board a manual tare can be entered
- This indicator has standard 3+3 I/O possibilities
- Supporting DHCP client/server and Ethernet sockets
- Free programmable with LUA for own programs




- Also applicable as motion(railwork) scale
- Internal DSD (Alibi) module

### Options

- SD card 64 mb as database module for 100,000 registrations



# FRONTMATEC



Do not hesitate to contact us for more information. We are only a phone call away.

#### Northern Europe

Phone: +45 36 999 099

E-mail: [as.ne@frontmatec.com](mailto:as.ne@frontmatec.com)

#### Central/Eastern Europe

Phone: +49 252 185 070

E-mail: [as.ce@frontmatec.com](mailto:as.ce@frontmatec.com)

#### Central/Eastern Europe, Poland

Phone: +48 227 345 551

E-mail: [as.ce@frontmatec.com](mailto:as.ce@frontmatec.com)

#### Southern Europe

Phone: +34 932 643 800

E-mail: [as.se@frontmatec.com](mailto:as.se@frontmatec.com)

#### Western Europe

Phone: +31 886 294 000

E-mail: [as.we@frontmatec.com](mailto:as.we@frontmatec.com)

#### Russia

Phone: +7 495 424 9559

E-mail: [as.ru@frontmatec.com](mailto:as.ru@frontmatec.com)

[frontmatec.com](http://frontmatec.com)